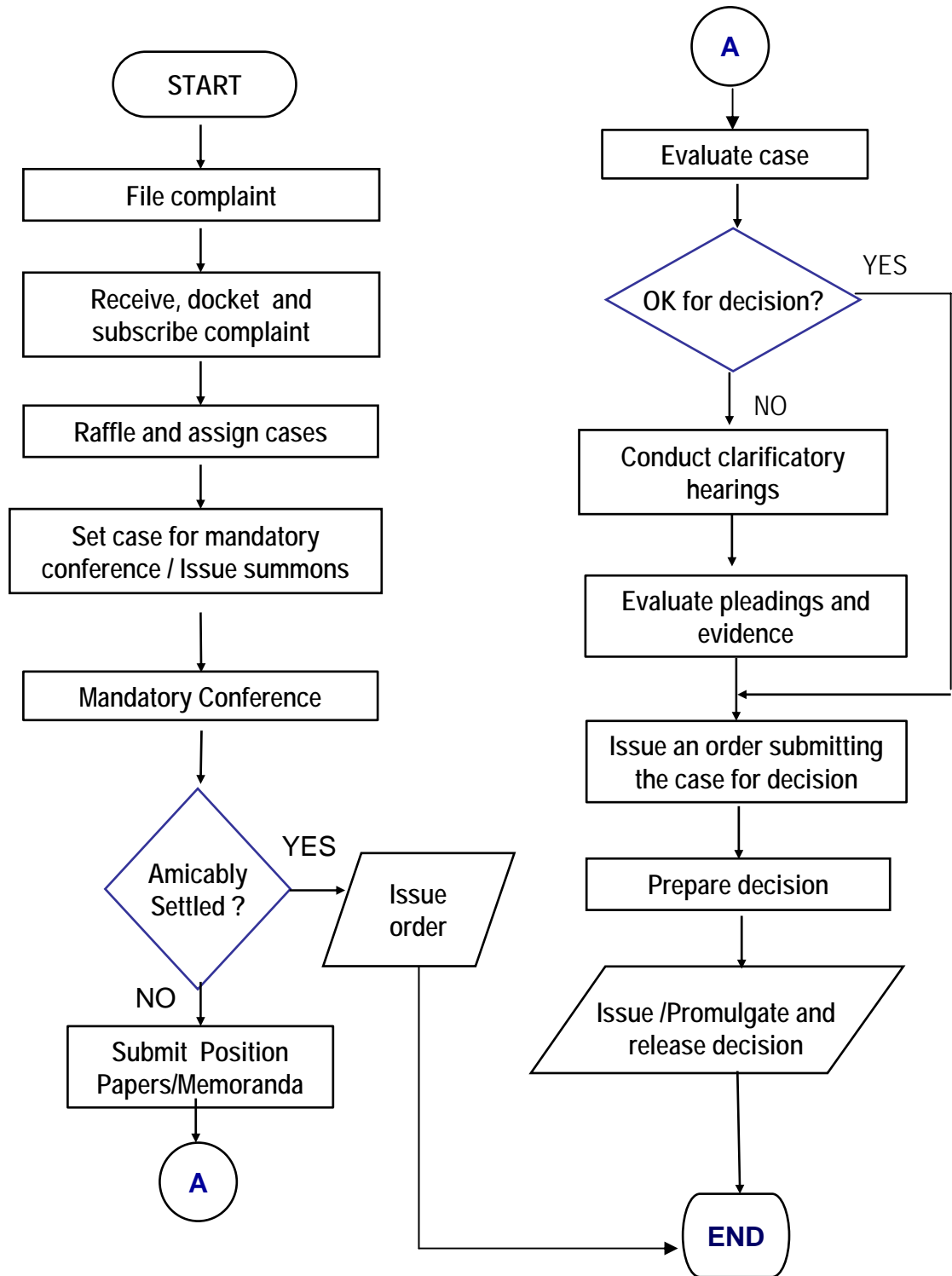
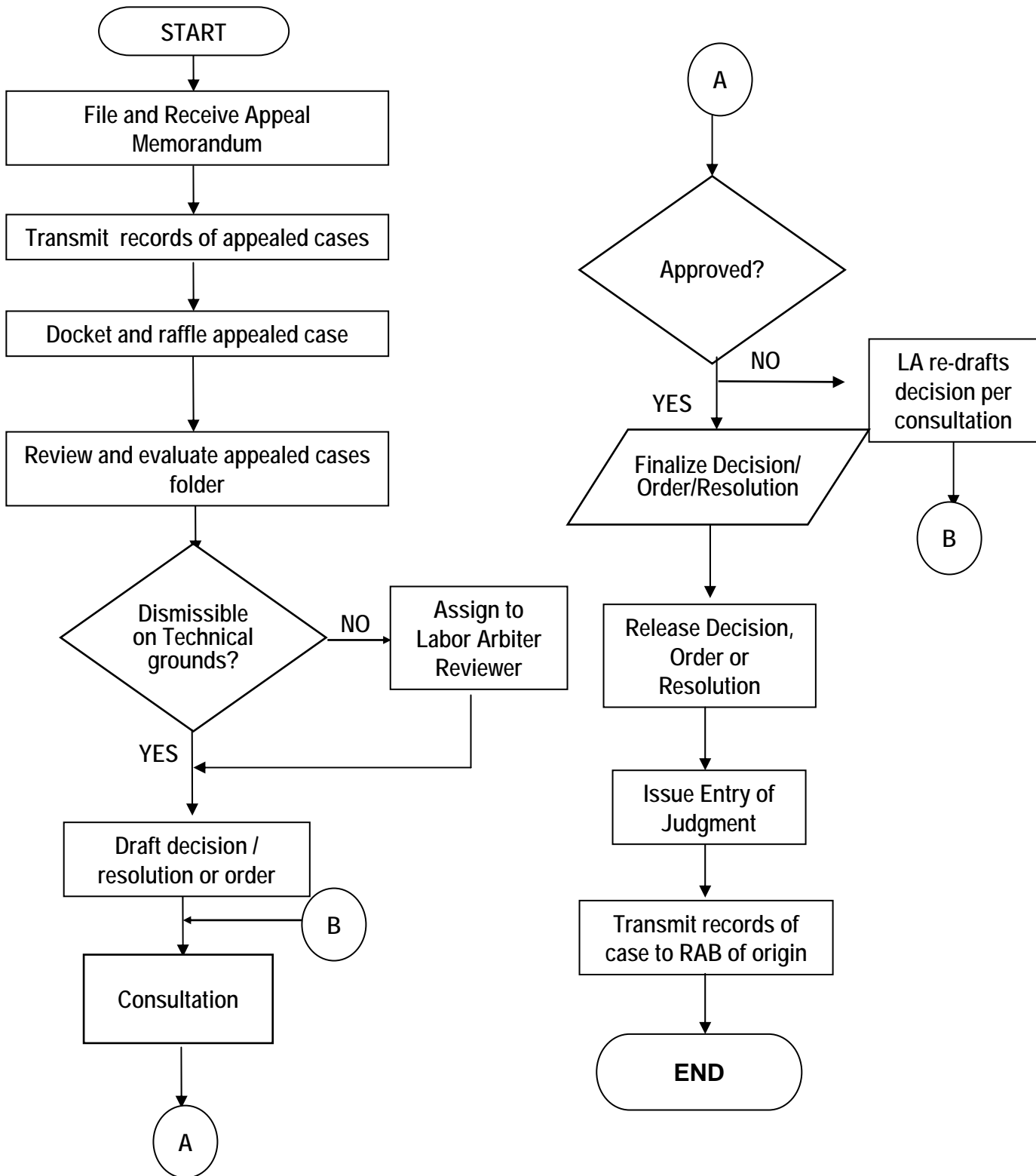


CASE FLOW AT THE REGIONAL ARBITRATION BRANCH LEVEL



*Update made on 9/11/2002 as per instruction of EC Pearl Velasco – to be used for purposes of her presentation during the Tripartite Consultation Meeting on 9/12/2002

CASE FLOW AT THE APPELLATE (COMMISSION PROPER) LEVEL



*Update made on 9/11/2002 as per instruction of EC Pearl Velasco – to be used for purposes of her presentation during the Tripartite Consultation Meeting on 9/12/2002